



**Transit  
Mixer Drives**

## TMD SERIES

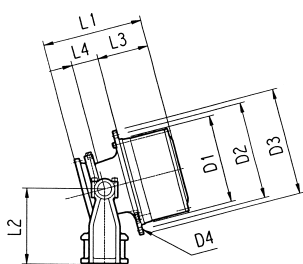
### TECHNICAL SPECIFICATION

- **Truck mixer capacity range:** 1 ÷ 12 m<sup>3</sup>
- **Torque range:** 3.000 ÷ 75.000 Nm
- **Gear ratios range:** 1:17 ÷ 1:161
- **Planetary reductions stages:** 2 or 3
- **Main bearing allows for chassis bending during travelling**
- **High axial and radial load capacity**
- **Suitable for both low speed and high speed hydraulic motors**
- **Larger mixer drives ("B" design) can be provided with water pump P.T.O. and speed sensor**

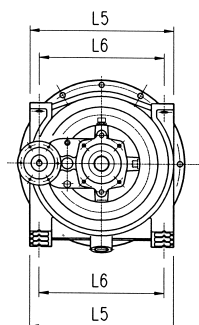
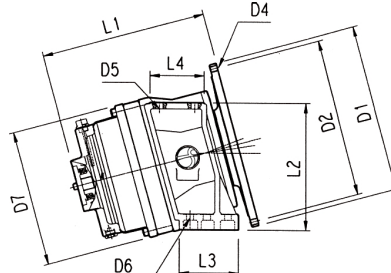
|                              |                | Model |                      |               |         |                                |                      |         |         |                |
|------------------------------|----------------|-------|----------------------|---------------|---------|--------------------------------|----------------------|---------|---------|----------------|
|                              |                | TMD   | 030                  | 12H           | 12L     | 20H                            | 20L                  | 500     | 600     | 750            |
| <b>Max. torque</b>           | Nm             |       | 3000                 | 12.000        | 12.000  | 20.000                         | 20.000               | 50.000  | 60.000  | 75.000         |
| <b>Range of ratios</b>       |                |       | 1:17<br>1:23<br>1:29 | 1:78<br>1:161 | 1:22    | 1:76<br>1:90<br>1:115<br>1:128 | 1:18<br>1:21<br>1:27 | 1:100   | 1:131   | 1:130<br>1:147 |
| <b>Hydraulic motor speed</b> |                |       | low                  | high          | low     | high                           | low                  | high    | high    | high           |
| <b>Max. input speed</b>      | rpm            |       | 550                  | 2.500         | 550     | 2.500                          | 550                  | 3.000   | 3.000   | 3.000          |
| <b>Drum capacity</b>         | m <sup>3</sup> |       | 0,5 ÷ 1              | 2 ÷ 3         | 2 ÷ 3   | 4 ÷ 5                          | 4 ÷ 5                | 6 ÷ 8   | 8 ÷ 10  | 10 ÷ 12        |
| <b>Oil quantity</b>          | L              |       | 1,5                  | 2             | 1,5     | 3                              | 2,5                  | 7       | 8,5     | 10             |
| <b>Design</b>                |                |       | A                    | A             | A       | A                              | A                    | B       | B       | B              |
| <b>Dimensions</b>            | <b>D1</b>      |       | 200                  | 280           | 280     | 358                            | 358                  | 530     | 530     | 530            |
|                              | <b>D2</b>      |       | 222                  | 310           | 310     | 390                            | 390                  | 500     | 500     | 500            |
|                              | <b>D3</b>      |       | 245                  | 340           | 340     | 430                            | 430                  |         |         |                |
|                              | <b>D4</b>      |       | 13 N° 4              | 17 N°10       | 17 N°10 | 17 N° 18                       | 17 N° 18             | 17 N°24 | 17 N°24 | 17 N°24        |
|                              | <b>D5</b>      |       |                      |               |         |                                |                      | 22 N° 4 | 22 N° 4 | 22 N° 4        |
|                              | <b>D6</b>      |       |                      |               |         |                                |                      | 22 N° 6 | 22 N° 6 | 22 N° 6        |
|                              | <b>D7</b>      | mm    |                      |               |         |                                |                      | 435     | 435     | 435            |
|                              | <b>L1</b>      |       | 270                  | 365           | 290     | 435                            | 360                  | 450     | 450     | 525            |
|                              | <b>L2</b>      |       | 195                  | 240           | 240     | 300                            | 300                  | 400     | 400     | 400            |
|                              | <b>L3</b>      |       | 138                  | 165           | 165     | 210                            | 210                  | 188     | 188     | 188            |
|                              | <b>L4</b>      |       | 89                   | 85            | 85      | 110                            | 110                  | 170     | 170     | 170            |
|                              | <b>L5</b>      |       |                      |               |         |                                |                      | 460     | 460     | 460            |
|                              | <b>L6</b>      |       |                      |               |         |                                |                      | 400     | 400     | 400            |
| <b>Weight</b>                | kg             |       | 45                   | 85            | 70      | 140                            | 130                  | 250     | 290     | 320            |

### DRAWINGS

**DESIGN A**



**DESIGN B**





**SMIT**  
hydraulics

**SMIT Hydraulics**

**Via Pietro Giardini, 318  
41100 Modena - ITALY**

[info@smithydraulics.it](mailto:info@smithydraulics.it)  
[www.smithydraulics.it](http://www.smithydraulics.it)

**PHONE**

+39 059 596 77 44  
+39 059 596 77 45

**FAX**

+39 059 596 08 80  
+39 059 596 08 88

**(Domestic market)**

**(International market)**