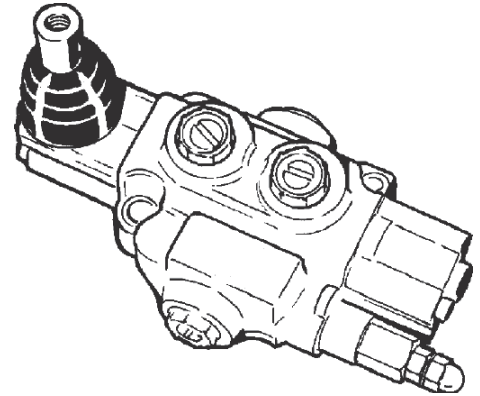




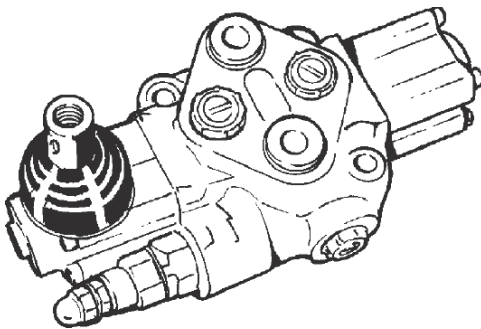
# Directional Control Valves

## C SERIES

Number of sections	1	
Nominal flow rate	L min <sup>-1</sup>	40
Max working pressure	300	
Max exit backpressure	80	
Pressure relief valve	bar	
Standard	60 ÷ 300	
On request	10 ÷ 250	
Working temperature	°C	-10 ÷ 80
Max spool blowby (@ 100 bar, 50 °C, 27 CST)	mL min <sup>-1</sup>	18
Weight	kg	1,9



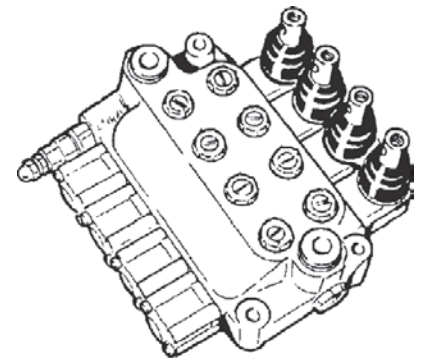
## BA SERIES



Number of sections	1		
Nominal flow rate	L min <sup>-1</sup>	45	35
Max working pressure	300		220
Max exit backpressure	80		10 - 12
Pressure relief valve	bar		
Standard	60 ÷ 300		
On request	10 ÷ 250		
Working temperature	°C	-10 ÷ 80	-10 ÷ 70
Max spool blowby (@ 100 bar, 50 °C, 27 CST)	mL min <sup>-1</sup>	18	30 - 35
Weight	kg	3,2	

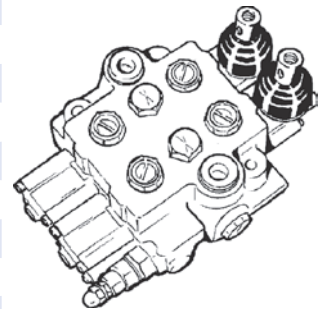
## BE SERIES

Number of sections	2 ÷ 6					
Nominal flow rate	L min <sup>-1</sup>	45	35			
Max working pressure (2, 3,4 and 5 sections)	350		250			
Max working pressure (6 sections)	bar		210			
Max exit backpressure	80		10 - 15			
Standard pressure relief valve	10 ÷ 350					
Working temperature	°C	-10 ÷ 80		-10 ÷ 70		
Max spool blowby (@ 100 bar, 50 °C, 27 CST)	mL min <sup>-1</sup>	18	25 - 30			
Weight	sections	2	3	4	5	6
	kg	5	6,75	8,5	10,1	12,15

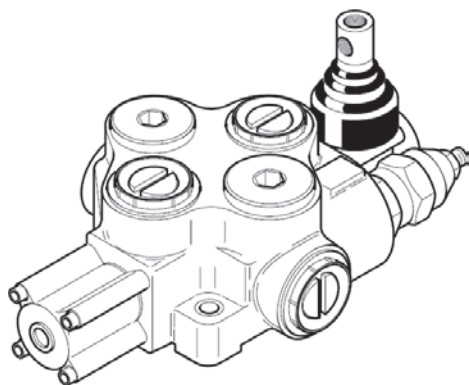


## CZ SERIES

<b>Number of sections</b>	1 ÷ 6						
<b>Nominal flow rate</b>	L min <sup>-1</sup>	65	50-55				
<b>Max working pressure</b>		350	250				
<b>Max exit backpressure</b>	bar	80	10 - 15				
<b>Standard pressure relief valve</b>		10 ÷ 350					
<b>Working temperature</b>	°C	-10 ÷ 80					
<b>Max spool blowby (@ 100 bar, 50 °C, 27 CST)</b>	mL min <sup>-1</sup>	20	30 - 35				
<b>Weight</b>	sections	1	2	3	4	5	6
	kg	5,4	8,7	11,95	15,35	17,7	20,05



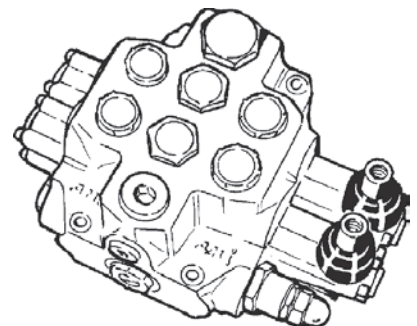
## AC SERIES



<b>Number of sections</b>	1	
<b>Nominal flow rate</b>		
<b>ABP 3/4-T 1"</b>	L min <sup>-1</sup>	80 - 90
<b>ABP T 1"</b>	L min <sup>-1</sup>	130
<b>Max working pressure</b>	300	
<b>Max exit backpressure</b>	80	
<b>Pressure relief valve</b>	bar	
<b>ABP 3/4-T 1"</b>	10 ÷ 300	
<b>ABP T 1"</b>	30 ÷ 300	
<b>Working temperature</b>	°C	-10 ÷ 80
<b>Max spool blowby (@ 100 bar, 50 °C, 27 CST)</b>	mL min <sup>-1</sup>	20
<b>Weight</b>	kg	6,05 ÷ 6,20

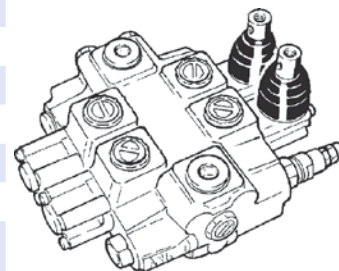
## FZ SERIES

<b>Number of sections</b>	2 ÷ 5					
<b>Nominal flow rate</b>	L min <sup>-1</sup>	120				
<b>Max working pressure</b>		220				
<b>Max exit backpressure</b>	bar	50				
<b>Pressure relief adjustable valve</b>		10 ÷ 220				
<b>Working temperature</b>	°C	-10 ÷ 80				
<b>Max spool blowby (@ 100 bar, 50 °C, 27 CST)</b>	mL min <sup>-1</sup>	21				
<b>Weight</b>	sections	1	2	3	4	5
	kg	11,9	16,4	20,9	25,4	29,9

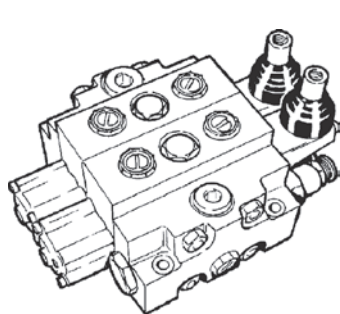


## E SERIES

<b>Number of sections</b>	1 ÷ 10										
<b>Nominal flow rate</b>	L min <sup>-1</sup>	45									
<b>Max working pressure</b>	350										
<b>Max exit backpressure</b>	bar	80									
<b>Standard pressure relief valve</b>	10 ÷ 350										
<b>Working temperature</b>	°C	-10 ÷ 80									
<b>Max spool blowby (@ 100 bar, 50 °C, 27 CST)</b>	mL min <sup>-1</sup>	20									
<b>Weight</b>	elements	1	2	3	4	5	6	7	8	9	10
	kg	5,7	8,2	10,7	13,2	15,7	18,2	20,7	23,2	25,7	28,2



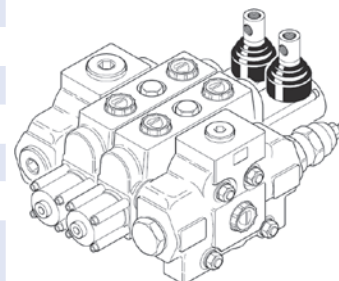
## DB SERIES



<b>Number of sections</b>	1 ÷ 10										
<b>Nominal flow rate</b>	L min <sup>-1</sup>	65									
<b>Max working pressure</b>	350										
<b>Max exit backpressure</b>	bar	80									
<b>Standard pressure relief valve</b>	10 ÷ 350										
<b>Working temperature</b>	°C	-10 ÷ 80									
<b>Max spool blowby (@ 100 bar, 50 °C, 27 CST)</b>	mL min <sup>-1</sup>	20									
<b>Weight</b>	elements	1	2	3	4	5	6	7	8	9	10
	kg	8,9	12,9	16,6	20,9	24,9	28,9	32,9	36,9	40,9	44,9

## AB SERIES

<b>Number of sections</b>	1 ÷ 10										
<b>Nominal flow rate</b>	L min <sup>-1</sup>	120									
<b>Max working pressure</b>	250										
<b>Max exit backpressure</b>	bar	80									
<b>Pressure relief adjustable valve</b>	30 ÷ 300										
<b>Working temperature</b>	°C	-10 ÷ 80									
<b>Max spool blowby (@ 100 bar, 50 °C, 27 CST)</b>	mL min <sup>-1</sup>	21									
<b>Weight</b>	elements	1	2	3	4	5	6	7	8	9	10
	kg	18,6	24,9	31,2	37,5	43,8	50,1	56,4	62,7	69	75,3



Information contained in this catalogue is accurate as of the publication date and is subject to change without notice. Performance values are typical values. Customers are responsible for selecting products for their applications using normal engineering methods.



**SMIT**  
hydraulics

**SMIT Hydraulics**

**Via Pietro Giardini, 318**  
**41100 Modena - ITALY**

[info@smithydraulics.it](mailto:info@smithydraulics.it)  
[www.smithydraulics.it](http://www.smithydraulics.it)

**PHONE**

+39 059 596 77 44  
+39 059 596 77 45

**FAX**

+39 059 596 08 80  
+39 059 596 08 88

**(Domestic market)**

**(International market)**